

# ABOUT FACE

The newsletter of  
Farming And Countryside Education

April 2008 Issue 14



## The Whole Child

There is a growing debate about what is meant by the term 'learning'. Traditionally, most of our efforts have focused on offering resources and activities that help young people acquire knowledge and skills – so called 'cognitive' benefits. Yet many educationalists such as Karen Malone would argue that we should be looking at the development of the whole child. She believes that we should think about the impact of a learning experience on a child's thinking, doing, experiencing, feeling, interacting and responding.

What the child experiences brings physical benefits and helps develop fitness and healthy living.

How the child interacts brings social benefits and helps develop social behaviours and a sense of community.

How the child feels emphasises the emotional benefits and helps develop improved well being and better self-esteem.

How the child responds offers personal benefits and helps develop personal and social development and changes in attitude.

In this edition of our newsletter there are many examples of work taking place that result in not just academic achievement but also benefit the

development, health and well-being of children. Our sector has an opportunity and a responsibility to offer more of these rich life experiences – a worthwhile investment in the whole child.

As part of the Learning Outside the Classroom Manifesto, FACE has been working in partnership with DCSF to produce a review of the impact of outdoor experiences on child development. Karen Malone was commissioned to gather evidence and her report will be available in late spring 2008.



# Supporting the Year of Food & Farming



## Waitrose Food For Thought in Tenbury

The Waitrose Food For Thought project continues to attract great interest from schools. Year 7 students at Tenbury High School welcomed Tim Daly from Waitrose and Brian Hainsworth from FACE who supported the enterprise day. Students worked to develop pizzas and ice cream products and teachers reported they were really motivated by opportunities to meet visitors and be involved in an exciting business.



## Renewables resource

As part of the Growing Schools Programme, FACE is working with the National Non-Food Crops Centre (NNFCC), the Specialist Schools and Academies Trust (SSAT) and the Association for Science Education (ASE) to develop a new on-line resource aimed at secondary schools entitled "Renewable World". The overall objective will be to encourage students to explore and understand the different potential provided by the production of non-food crops and "renewables" and will encourage them to make sustainable and environmentally friendly choices in their everyday life.



## New Educational Developments At Brogdale Farm Kent

A new range of educational resources including a new teachers' pack and Key Stage 2 tours was launched in February 2008 at Brogdale Farm Faversham, home of the national fruit collection, the largest living collection of fruit trees and plants in the world..

Brogdale Farm recently became a member of FACE and has worked in conjunction with the team to create a programme of hands on education activities with links to the science, (plant science & genetics) and geography curriculum whilst supporting sustainable development and healthy living topics.

Brogdale Farm is set in over 150 acres of Kent countryside and is a great resource for theoretical and practical teaching of children of all ages and abilities. Brogdale Farm is home to over 2,300 different varieties of apple, 550 of pear, 350 of cherry and smaller collections of bush, nuts and grapes.

Facilities for schools include a picnic area, toilets, access to The Orchard Tearoom and Market Place shops, expert guides, weather station and orchard trail.

Tours are available all year round. For more information or to book a tour go to [www.brogdalecollections.co.uk](http://www.brogdalecollections.co.uk)

## Links in Lincolnshire



Lincolnshire teachers spent two days touring farms and meeting Advisors for Outdoor Education, ESD and Healthy Schools. They found out about Living Eggs incubator hire and funding and support from the Year of Food & Farming (YoFF). As a result, each school was matched with a host farmer and plans are now underway to encourage a plethora of visits! Many of the schools have also entered the Lincolnshire Agricultural Society's Schools Challenge. The FACE supported project was funded by CfBT and YoFF.

# Supporting the Year of Food & Farming



## Schools Competition – Growing Food Project

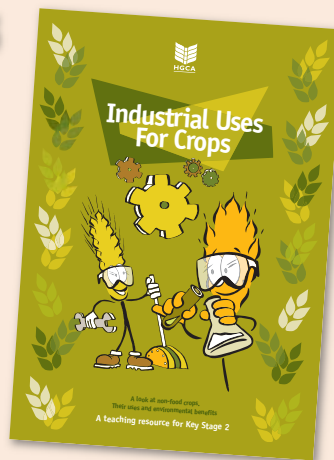
As part of the Year of Food and Farming the Royal Norfolk Agricultural Association is launching a new schools competition – Growing Food Project. This competition is open to all Norfolk Schools and a prize of £1,000 will be awarded. The winning school will be invited to display their produce and/or photographs at the Royal Norfolk Show on the 25 & 26 June 2008. Entries close on Wednesday 4 June 2008.

For further details contact Linda Rose, 01603 731966 or email [linda@royalnorfolkshow.co.uk](mailto:linda@royalnorfolkshow.co.uk)



## Industrial Uses For Crops

HGCA have produced a new free teaching resource for Key Stage 2 called *Industrial Uses For Crops*. It takes a look at non-food crops, their uses past and present. The pack, written by FACE, explores the environmental benefits of the sustainable products that are being developed from renewable and biodegradable resources. Also included in the pack are information sheets and activity sheets as well as website and curriculum links and a glossary. *Industrial Uses for Crops* can be ordered through the Grain Chain Website, [www.grainchain.com](http://www.grainchain.com)



## Free seeds for schools as BBC launches Breathing Places Schools

On 31 January the BBC launched its Breathing Places Schools campaign, urging all schools to encourage and support wildlife, with core 'Do One Thing' activities aimed at children in primary schools. The main activity for the spring term is planting for wildlife, and a further activity will follow every term for the next two years. The summer term's focus will be on mini-beast homes. Schools can register free on the BBC website to access activity sheets, packs of flower seeds (in the spring term), teachers' notes and instructions, and other materials that can help them to start creating havens for wildlife around their school. Find out more at: [www.bbc.co.uk/breathingplaces/schools/](http://www.bbc.co.uk/breathingplaces/schools/)

FACE has been a lead partner in the development of this project and we have added some new pages to the Biodiversity section of our website, giving more information about the BBC Breathing Places Schools project and details of the flowers that will be grown from the spring term's seed packs. See: [www.face-online.org.uk/biodiversity/](http://www.face-online.org.uk/biodiversity/)



## Fordhall Forest School

Fordhall Farm, England's first community owned farm in North Shropshire, has been awarded £7,200 by the Forestry Commission for the development of a Forest School site. This grant will fund the cost of building a footbridge over the river Tern to allow Buntingsdale School, Nursery and local families sustainable and environmentally friendly access to the farm. The alternative was a bus ride costing £90 per visit. The goal is to raise the profile of Forest Schools in the Market Drayton area. If you would like further details please contact 01630 638696 or [project@fordhallfarm.com](mailto:project@fordhallfarm.com).

**breathing  
places  
schools**



# Supporting the Year of Food & Farming



## Finding out about Sea Fishing

Organised in partnership with Seafood Cornwall and local fish producers, FACE co-ordinator Paul Hillard took a party of teachers to Newlyn Fish Market to talk to the fishermen and auctioneers. They moved on to visit a fish processing plant for a filleting demonstration and a 'touch and taste' tour. This fascinating day concluded with a fish cookery masterclass!

## The FACE website goes from strength to strength

Our website [www.face-online.org.uk](http://www.face-online.org.uk) is the first port of call to many people new to FACE but is also an important resource for all those familiar with our work and keen to keep an eye on new developments.

For example, FACE has launched podcasts, the first in the series being provided by Guy Smith, an NFU farmer in Essex. A trial 'newsround' style video has been produced in partnership with Country Channel and funding is being sought for regular broadcasts on the website.



FACE is delighted that two new farm profiles have been added. Dolithon Meats in Wales supplies Welsh lamb and Black beef locally, at farmers' markets and on-line.

FACE Associate Member John Whitby has kindly supplied information about Rushall Farm in the beautiful Pang Valley, part of the North Wessex Downs AONB. Thanks to Cliff Marriott for his help.



## Learning along the food chain schools DVD

A new DVD is available from Organic Centre Wales and FACE which shows primary school children learning from farm visits, gardening in school, visiting a farmers' market, making carrot soup and enjoying a local food school meal. Aimed at primary school teachers to encourage them to take a wider view of food education, this bilingual 7-minute film carries an endorsement from education minister Jane Hutt. Please contact Jane Powell ([jane@face-online.org.uk](mailto:jane@face-online.org.uk), tel. 01970 622248) if you would like a copy.

## Children see 'beyond the farmgate' with new DVD

A new DVD 'Beyond the farmgate – the farmer and you' has been launched by the Women's Food and Farming Union and HGCA as part of the Year of Food & Farming. Kent farmer Maureen Friday says: "WFU wanted to present a fair and balanced account of farming in the 21st century to a generation that has become far removed from the realities of food production."

Suitable for all age groups but targeting Key Stages 2 and 3, the DVD takes children through the whole food chain – from preparing the ground, planting and harvesting crops, and looking after livestock, through to supplying the supermarkets.

WFU Farming in the Classroom speakers leave the DVD with the school after visiting them. For further information contact Maureen Friday, Farming in the Classroom co-ordinator, WFU 01622 890959 [maureen.friday@o2.co.uk](mailto:maureen.friday@o2.co.uk)



with thanks to Paul Howard Photography

# Supporting the Year of Food & Farming



## Prize Winning Pond

FACE members Jane and Steve Ellsmoor of Dorrington Hall Farm have had some good news - they won first prize in the FWAG Great Shropshire Pond Competition! Their prize included £250 towards a conservation project. Jane said, "We are really pleased about this as the pond is relatively new - about 5 years old but it is teeming with wildlife – frogs, newts, different types of geese and water birds. Last year we had a pair of oystercatchers stay for a short while and we have seen a kingfisher there. The pool is a feature of our farm walk and as a result of the win we will be hosting a farm walk for FWAG in early summer."

## Second Bayer/FACE Awards

Following the success of the 2007 Bayer/FACE Educational Awards, farmers who host school visits are again being invited to submit nominations under a number of categories: Access; Biodiversity; Countryside Careers; Farm to Classroom; and Innovative Learning. Application details are available from FACE before the end of March and winners will receive their awards at a lunch in London on September 5th.



*The* BAYER / FACE  
Awards



## Spring Gardening Show Is A Real Education!

HBG Construction is working with six schools to recycle the rubbish from a typical household skip and turn it into a proper show garden for display to some 90,000 visitors at this year's Malvern Spring Gardening Show (8 – 11 May 2008), and in the same environmentally-friendly vein, pupils and classes are being invited to design a garden ornament out of items which would normally be sent to landfill. 'The Future Is Wild Competition' will see school pupils modelling a flowering plant of the future, which has evolved new methods of survival and they will also have the chance to enter the 'Enterprise Competition' by a horticultural-based business.

## Growing Schools Garden

FACE is contracted by the Department for Children, Schools and Families (DCSF) to manage its popular Growing Schools programme. In April 2008 the award-winning Growing Schools Garden developed by Chris Beardshaw for Hampton Court 2007 will be re-located at Birmingham Botanical Gardens & Glasshouses as a permanent teaching resource.

FACE and the Growing Schools partners are planning a teachers' conference to follow the launch on April 7th. In addition, the Growing Schools programme will be launching an

innovative new teachers' resource to support the new garden. This contains a multitude of video case studies, toolkits and other resources. It demonstrates how teaching and learning outside the classroom, either within the school grounds or in a variety of places and spaces beyond the school, can enrich the learning experiences of young people.

The resource will be available from mid March and can be accessed through the Growing Schools website [www.teachernet.gov.uk/growingschools](http://www.teachernet.gov.uk/growingschools).

For more information please visit the web site: [www.threecounties.co.uk](http://www.threecounties.co.uk) or call Sue Hodgson-Jones, TCAS Education Officer on 01684 584900 or e-mail: [sue@threecounties.co.uk](mailto:sue@threecounties.co.uk)



# Supporting the Year of Food & Farming

## Care Farming Research

Research commissioned by the National Care Farming Initiative UK (NCFI), based at Harper Adams University College, Shropshire, has revealed that care farming is a viable solution to address increasing pressures on the health sector and social care providers, offender management services and educational bodies whilst ensuring the economic viability of farms.

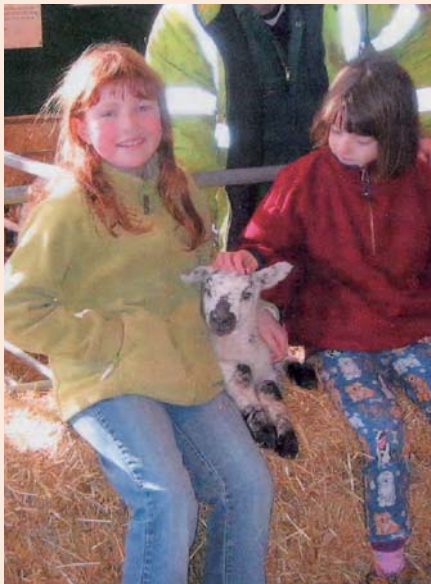
To find out more see [www.ncfi.org.uk](http://www.ncfi.org.uk)



## South East Seminars

As part of the Year of Food and Farming, FACE has organised a number of seminars throughout the country. In the South East, three very successful seminars were arranged to inform farmers about current developments in countryside education, CEVAS, and the Year of Food and Farming; and to meet and share experiences with other farmers and see examples of good practice already taking place on farms. Farmer presentations about their experiences of hosting visits were really inspirational and organisations made excellent links with one another.

Stephanie Wood, School Food Matters Director ([www.schoolfoodmatters.com](http://www.schoolfoodmatters.com)) said "We want to encourage hand-on experience of growing food and to link every school with a local farm to personalise the food chain", and to this end is now working with FACE Associate Member John Whitby.



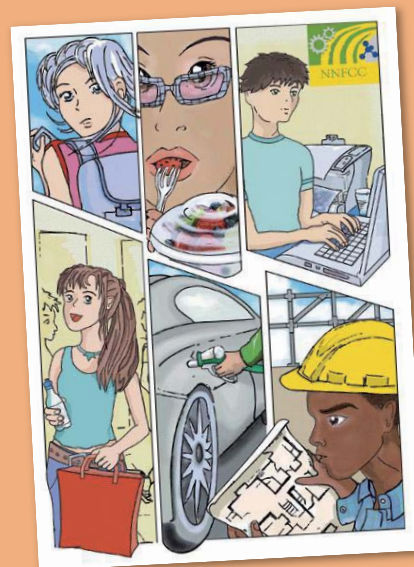
## Lambing at Sparsholt

Sparsholt College has diversified its activities, like many other farms, to encompass events for the general public and in January 3,000 people attended the popular lambing event. Sparsholt has also started to run children's parties and other visiting groups include Brownies and the WI. Work will start soon with the "Rainbow Trust" which provides care and support for terminally ill children and their families.

Graham Boyt the Farm manager would encourage farmers to take part in events such as "Farm Sunday", it can be very rewarding and there is lots of support around to get started.

## It's Groovy to Be Green!

The National Non-Food Crops Centre (NNFCC) has put together new online resources to help children learn about renewable materials. The Groovy Green Adventures is a collection of animated stories showing how crops grown in the UK can be turned into many products, from paint to painkillers. There's also a new Grow Your Own Sunflower animation, which explains how to grow sunflowers at school – and how they can be a great teaching resource for explaining sustainability.



These, and many other educational resources about the environment and climate change, are available from [www.nnfcc.co.uk](http://www.nnfcc.co.uk).

Dr Jeremy Tomkinson, CEO of NNFCC says: "It is really important that schools have the resources to explain not just the environmental dilemmas we face in the future, but also the possible solutions."

# Supporting the Year of Food & Farming



## Sustainable Schools East Midlands website

FACE has been closely involved in work with the Sustainable Schools initiative throughout the country. For example, FACE was awarded the contract to develop a website for the East Midlands Sustainable Schools. The interactive website presents case studies and signposting to assist schools and providers in the region to work together more effectively. [www.sustainableschoolseastmidlands.org.uk](http://www.sustainableschoolseastmidlands.org.uk)



## Young Farmers' Clubs supporting Year of Food and Farming

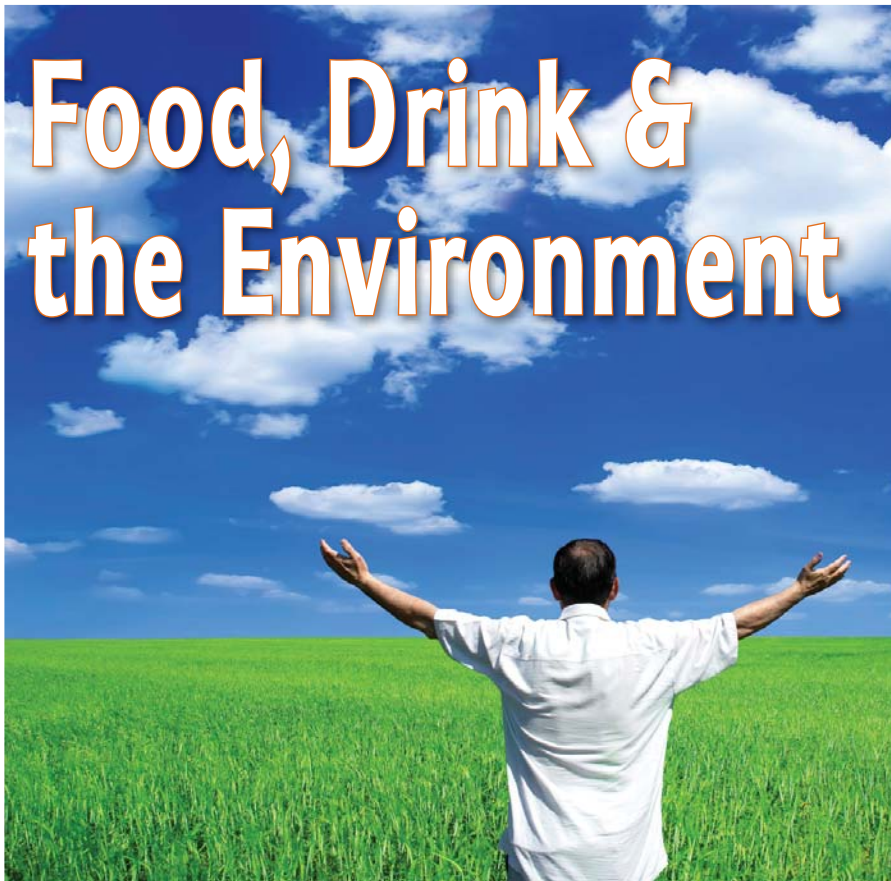
As part of its contribution to The Year of Food and Farming, Worcestershire Federation of Young Farmers' Clubs is supporting an 'Adopt a farmer' scheme.

Serena Marshall, County Youth Worker for the club says: "We have always been enthusiastic about helping young people to understand where their food is produced. Worcestershire farmers were badly hit by floods last year, so I was particularly keen to get involved in anything to help people with their understanding of the countryside and to support local farmers by building awareness of their products for economic reasons too.

"As well as farm visits, we will also be showcasing our cookery team at the local farmers market – the suppliers challenged the county cooking team to cook some of the produce from fresh at the market and they accepted the challenge!"

For more information, contact Sarah Palmer on: 024 76 857213

# Food, Drink & the Environment



FACE member, the Food and Drink Federation (FDF), recently unveiled its Five-fold Environmental Ambition outlining the key areas where leading food and drink manufacturers throughout the UK will be making a real difference to the environment.

The ambitions include reducing CO2 emissions; sending zero food and packaging waste to landfill from 2015; reducing the level of packaging reaching households; improving water efficiency to reduce water use; and embedding environmental standards in their transport practices to achieve fewer and friendlier food miles.

For more details about the Ambition and see examples of companies already actively changing their practices visit:

[http://www.fdf.org.uk/environment\\_makingadifference.aspx](http://www.fdf.org.uk/environment_makingadifference.aspx)



## Supporting the Year of Food & Farming

### Criminal Records Bureau Disclosures

If you are an organisation that wishes to use Criminal Records Bureau (CRB) checks as part of your recruitment or appointment processes, FACE may be able to help you.

As an "umbrella body", FACE can supply you with the necessary forms and guidance.

Our charges are very competitive: only £15 per application for non-members

and £12 for FACE members. (In addition the CRB makes a charge of £31 or £36 for all applicants except volunteers). We can help to simplify the process for you and can answer any queries promptly, efficiently and in strict confidence.

If we can help you with CRB Disclosures, please telephone 024 7685 3089 or email [janet@face-online.org.uk](mailto:janet@face-online.org.uk)



### YEAR OF FOOD AND FARMING

[www.yearoffoodandfarming.org.uk](http://www.yearoffoodandfarming.org.uk)

### Sponsorship opportunity!

FACE is delighted that so many of its partners are submitting articles about the exciting work that is being carried out with schools in our sector.

The newsletter costs £1500 to print and we would be pleased to hear from any organisation that would be interested in sponsoring a future edition.

### John Spedan Lewis Foundation

FACE is very pleased to have received funding from the John Spedan Lewis Foundation which was created in memory of the founder of the John Lewis Partnership. This will support farm visits by 24 primary schools in Wales, the North West and the North

East where the pupils will be able to see how farmers look after the countryside. The children will carry out activities to learn about the importance of biodiversity on farms. The visits will take place during the summer term of 2008.



#### FACE

Arthur Rank Centre  
Stoneleigh Park  
Warwickshire  
CV8 2LZ

Bill Graham 024 7685 8261  
Janet Hickinbottom 024 7685 8261  
[enquiries@face-online.org.uk](mailto:enquiries@face-online.org.uk)  
Fax 024 7641 4808

[www.face-online.org.uk](http://www.face-online.org.uk)

FACE helps young people learn more about food and farming in a sustainable countryside. FACE is supported by the Royal Agricultural Society of England, the National Farmers' Union and its members.

Charity number 1108241