



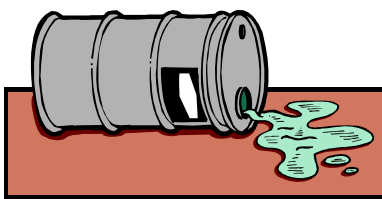
1. Thinking about school visits to your farm?

So you are thinking about hosting school visits to your farm.
Great!

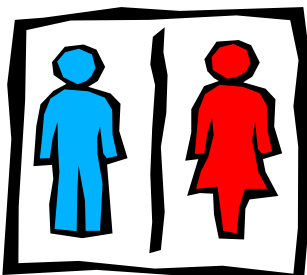
Do your homework. Contact the Local Education Authority in your area to find out what their policy is on school visits, especially to farms.
www.dfes.gov.uk/leas

Speak to your insurer to see if you are covered for visits and what costs might be needed.

What are the Health & Safety implications?
www.hse.gov.uk



www.face-online.org.uk
Do you have toilets and hand washing facilities?



Is there a place for coaches to park?

Is there somewhere undercover for children to eat?

Have you considered disabled access to as many areas as possible?



Who will be your market? Are you looking to attract primary school children or do you have more specialist knowledge available to older students?

Some useful terms:
Key stage 1 = 5-7 yr olds
Key stage 2 = 7-11 yr olds
Key stage 3 = 11-14 yr olds
Key stage 4 = 14-16 yr olds

What are schools looking for? Find out about the national curriculum at www.nc.uk.net

Better still, speak to some teachers and ask them how a farm visit might help them to deliver the curriculum.

Your local Education Business Partnership might be able to help. Find them through the local education authority.

Spend some time ringing round the schools in your area. Ask to speak to the Head teacher and explain what you are planning to do. The Head might be able to say whether they would find your facility useful.



Get hold of brochures and leaflets advertising farm visits in other areas.

Look at www.farmsforteachers.org.uk for information about other farms offering visits

What might you include?:
Contact details
Location map
Opening times
Costs
Activities offered (see the accompanying sheet Planning school visits)
Some photos